

GEHR PE-UHMW[®] and GEHR POM-C[®]

Blue dyed semi-finished products – perfectly suited for food processing

Plastic materials have many advantages over other materials because of their properties and approvals and the fact that they are easy to machine. They have therefore successfully been established in the food-processing industry. Here, the materials must be compliant to the strict requirements of various national and international food authorities and regulations to find their way into applications as components in equipment and machinery used in the meat, dairy, grain and vegetable processing industry.

The food-processing industry prefers to use blue dyed semi-finished products for the two following reasons: in case of machine downtimes during food-processing, spores, fungi, mould and other residues may develop which are difficult to detect on natural coloured or black dyed assembly groups. However, since only few foodstuffs are of blue natural colour, components made of blue dyed semi-finished products create a strong contrast which helps to detect impurities. This ensures that additional cleaning of individual equipment units can be initiated in good time.

Beyond that, food-processing equipment components are often exposed to high mechanical load. It can therefore not be excluded that - very rarely - plastic particles can contaminate the foodstuff, although the material is normally not toxic. In the worst case, blue dyed plastic components stand out optically and can be detected much quicker. Removing fractured components from the food-processing process which contaminate the foodstuffs is simplified considerably.

Our semi finished products have food contact approval according:

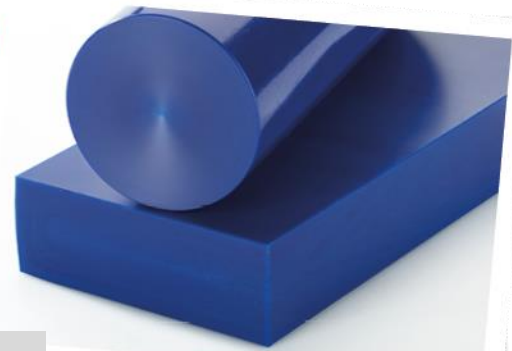
- 1935/2004/EC
- 10/2011/EC
- 2023/2006/EC



THERMOPLASTIC STOCK SHAPES

Blue dyed semi-finished products for food processing industry

NEU



We have blue dyed semi-finished products with food contact approval in stock in the following dimensions:

GEHR POM-C

Round Rods



Length:
1 | 2 | 3 m

Ø	Tolerances	kg/m
20	+0,2 +0,8	0,474
30	+0,2 +1,0	1,060
40	+0,2 +1,2	1,870
50	+0,3 +1,3	2,920
60	+0,3 +1,6	4,200
70	+0,3 +1,6	5,690
80	+0,4 +2,0	7,460

Sheets



Width: 610 m
Length: 1 | 2 | 3 m

□	Tolerances	kg/m
20	+0,3 +1,5	18,900
30	+0,5 +2,5	28,140
40	+0,5 +2,5	37,400
60	+0,5 +3,5	55,900

GEHR PE-UHMW

Round Rods



Length:
1 | 2 m

Ø	Tolerances	kg/m
20	+0,2 +1,2	0,317
30	+0,2 +1,2	0,703
40	+0,2 +1,5	1,240
50	+0,3 +2,0	1,950
60	+0,3 +2,3	2,800
70	+0,3 +2,5	3,800
80	+0,4 +3,0	4,947

You have questions? – Please don't hesitate to contact us!